

DIOTEC ELECTRONICS CORP
 18020 Hobart Blvd., Unit B
 Gardena, CA 90248 U.S.A
 Tel.: (310) 767-1052 Fax: (310) 767-7958

25 AMP LEAD MOUNT BUTTON DIODES

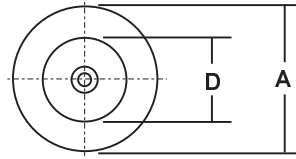
FEATURES

- VOID FREE VACUUM DIE SOLDERING FOR MAXIMUM MECHANICAL STRENGTH AND HEAT DISSIPATION (Solder Voids: Typical $\leq 2\%$, Max. $\leq 10\%$ of Die Area)
- LARGE DIE FOR HIGH POWER HEAVY DUTY PERFORMANCE
- HIGH HEAT HANDLING CAPABILITY WITH VERY LOW THERMAL STRESS
- PROPRIETARY JUNCTION PASSIVATION FOR SUPERIOR RELIABILITY AND PERFORMANCE
- LOW FORWARD VOLTAGE DROP

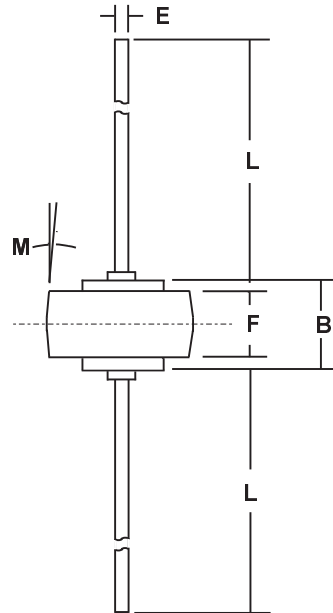
MECHANICAL DATA

- Case: Molded Epoxy (UL Flammability Rating 94V-0)
- Finish: All external surfaces are corrosion resistant and the contact areas are readily solderable
- Maximum Lead Soldering Temperature: 210 °C, 3/8" case for 10 seconds at 5 lbs tension
- Mounting Position: Any
- Polarity: Color band or diode symbol on case
- Weight: 0.09 Ounces (2.5 Grams)

MECHANICAL SPECIFICATION



Die Size:
0.165" x 0.165"
 Square



DIM	MILLIMETERS		INCHES	
	MIN	MAX	MIN	MAX
A	8.43	8.69	0.332	0.342
B	5.94	6.25	0.234	0.246
D	5.46	5.71	0.215	0.225
E	1.27	1.35	0.050	0.053
F	4.19	4.45	0.165	0.175
L	25.15	25.65	0.990	1.010
M	5° NOM		5° NOM	

RoHS COMPLIANT

MAXIMUM RATINGS & ELECTRICAL CHARACTERISTICS

Ratings at 25 °C ambient temperature unless otherwise specified.

PARAMETER (TEST CONDITIONS)	SYMBOL	RATINGS							UNITS
		MR750	MR751	MR752	MR754	MR756	MR758	MR7510	
Series Number									
Maximum DC Blocking Voltage	VRRM								VOLTS
Maximum RMS Voltage	VRWM	50	100	200	400	600	800	1000	
Maximum Peak Recurrent Reverse Voltage	V _{DC}								
Non-repetitive Peak Reverse Voltage (Half wave, single phase, 60 Hz peak)	VRSM	60	120	240	480	720	960	1200	
Average Forward Rectified Current @ T _c =150 °C	I _O	25							AMPS
Peak Forward Surge Current (8.3ms single half sine wave superimposed on rated load)	I _{FSM}	500							
Maximum Forward Voltage Drop at 25 Amp DC, 3/8" Leads	V _F	1.1 (Typical 1.05)							VOLTS
Maximum Instantaneous Forward Voltage Drop at 100 Amp	V _F	1.25							
Maximum Average DC Reverse Current @ T _A = 25 °C	I _{RM}	1							μA
At Rated DC Blocking Voltage @ T _A = 100 °C		50							
Maximum Thermal Resistance, Junction to Case (Note 1)	R _{θJC}	0.9							°C/W
Junction Operating and Storage Temperature Range	T _J , T _{STG}	-65 to +175							°C

Notes: 1) Both Leads to Heatsink, Equal Length